

## 1 System requirements (minimum)

<b>Operating system</b>	Windows 2000 SP4, Windows XP Professional SP2, Windows Vista
<b>RAM</b>	1 GB (Windows 2000 / Windows XP) 2 GB (Windows Vista)
<b>Memory</b>	Program: 500 MB Data: 1 GB (for about 5000 determinations)
<b>Interface</b>	USB

The windows user must have administrator rights in order to be able to install the **tiBase** software.

Additional requirements for the **tiBase server**:

<b>Network</b>	10 MBit/s, stable and permanent Communication via TCP/IP
<b>Operating system</b>	Windows 2000 SP4, Windows XP Professional SP2, Windows 2000 Server, Windows 2003 Server, Windows Vista

## 2 Single workplace installation

With the single workplace version **tiBase full** the workplace and database will be installed on your computer.

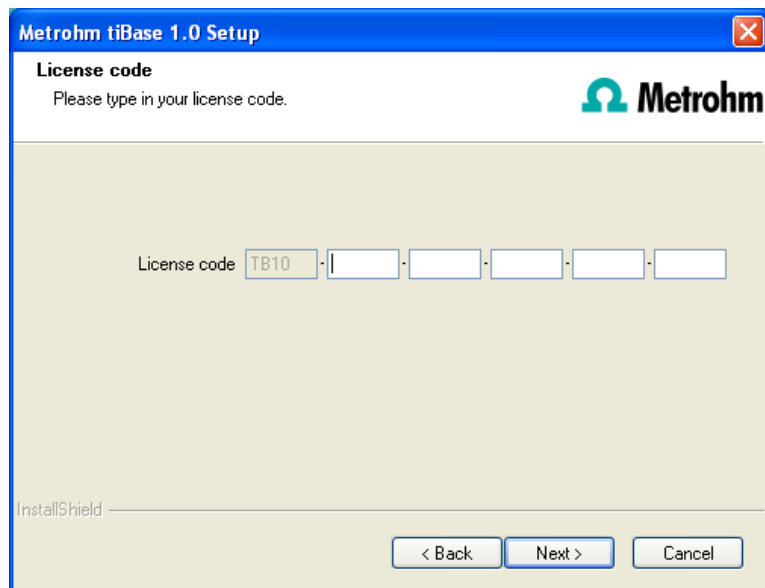
- 1 On inserting the CD into the drive of your computer the installation will be started automatically. If this option is deactivated on your computer, double click the file **setup.exe**.

If the minimum system requirements are not met (see above) a message appears. Click on **[Yes]** if you like to install the program nevertheless.

Afterwards, click on **[Next]**.

- 2 After having read the license agreement for **tiBase** and accepting it with **[Yes]** a window will appear where you can enter the license code.

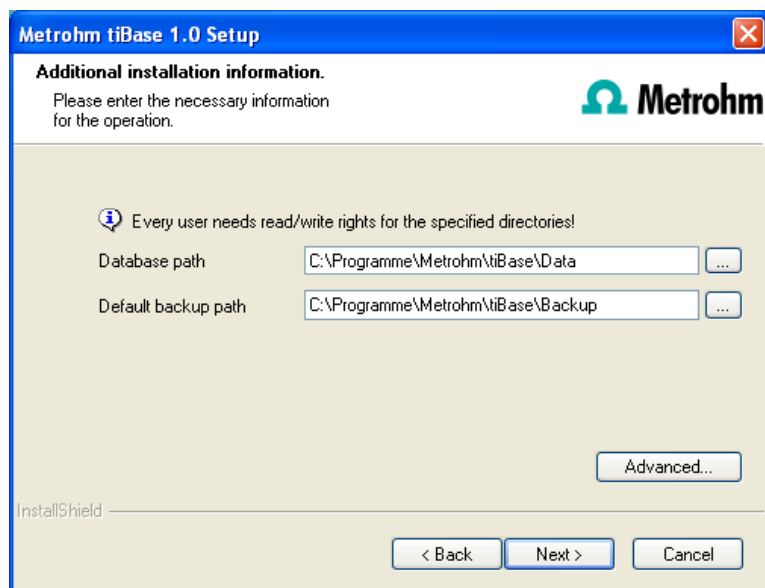
- 3 Enter the license code for **tiBase full** and click on **[Next]**.



The screenshot shows the 'Metrohm tiBase 1.0 Setup' window. The title bar is blue with the Metrohm logo on the right. The main area has a light beige background. At the top, it says 'License code' and 'Please type in your license code.' Below this is a large text input field divided into six segments by hyphens. The first segment contains 'TB10'. At the bottom, there are three buttons: '< Back', 'Next >', and 'Cancel'. The 'InstallShield' logo is visible in the bottom left corner.

- 4 Now enter the target folder for the **tiBase** installation and confirm with **[Next]**.

- 5 In the dialog window **Additional installation information** you can define the paths for the database and backup files:



The screenshot shows the 'Metrohm tiBase 1.0 Setup' window, 'Additional installation information' screen. The title bar is blue with the Metrohm logo on the right. The main area has a light beige background. At the top, it says 'Additional installation information.' and 'Please enter the necessary information for the operation.' Below this is a large text input field. In the center, there is an information icon (i) and the text 'Every user needs read/write rights for the specified directories!'. Below this are two text input fields: 'Database path' and 'Default backup path'. Both fields contain the path 'C:\Programme\Metrohm\tiBase\Data' and 'C:\Programme\Metrohm\tiBase\Backup' respectively. To the right of each field is a button with three dots (...). At the bottom right, there is an 'Advanced...' button. At the bottom, there are three buttons: '< Back', 'Next >', and 'Cancel'. The 'InstallShield' logo is visible in the bottom left corner.



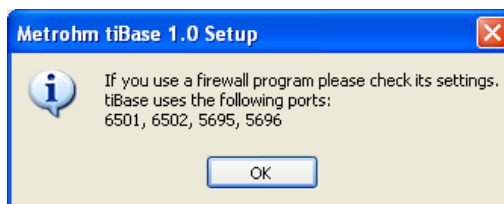
#### Note

The default paths are different for Windows 2000, Windows XP and Windows Vista.

With the button **[Advanced...]** the ports **tiBase** uses to communicate with the database and administration server can be modified. If the ports are

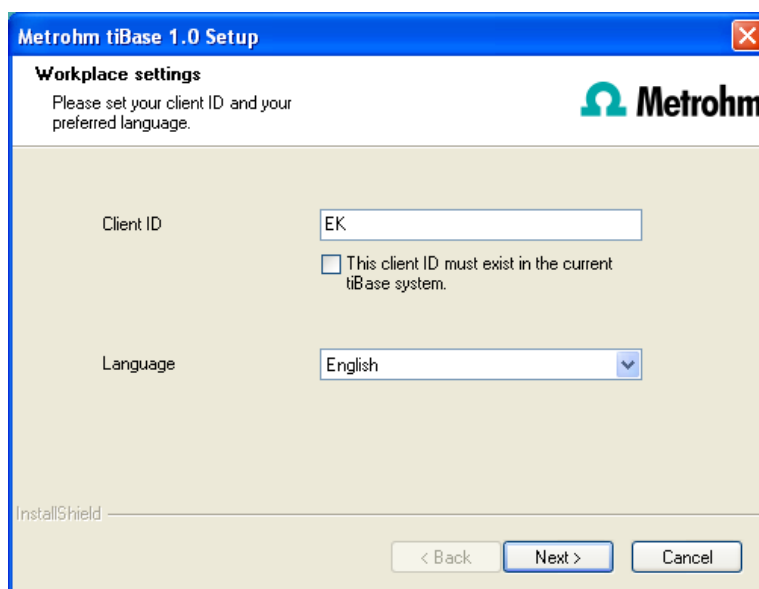
used already, an appropriate error message will appear. Ask your system administrator for more information about this. Continue with **[Next]**.

- 6 Follow the instructions of the program until the following message appears:



This message points out which ports **tiBase** uses. Write down these ports and inform your system administrator in case **tiBase** is not able to connect to the database. Confirm the message with **[OK]**.

- 7 As soon as the copying procedure has been finished you can set further workplace settings:



The option **The client ID must exist in the current tiBase system** is only selectable if a database from a previous installation already exists on your computer or if you want to connect to a database server which has been installed on another computer.

If you activate this option **tiBase** checks whether the identifier you have entered exists in the database. If this is true the identifier and all associated settings will be adopted. With this option a renewed installation of a client is much easier.

Click on **[Next]**. If the database ports are not available, an appropriate error message will appear and the installation will be canceled. In this case, check your server and firewall settings before installing the program again.

- 8 At the end of the installation the file **info.txt** will be created which contains all relevant information concerning your current **tiBase** installation. Save this file on your hard disk in case of need in future and print it (add to IQ). Complete the installation with **[Finish]**.

An **InstallLog** file can be found in the installation directory of **tiBase** (default: C:\Program Files\Metrohm\tiBase) under bin\InstallLog. It contains a listing of all files copied to your computer during the installation and a confirmation that the installation has been successfully completed.

### 3 Client/Server installation

With the **tiBase multi** version (client/server version with 3 licenses) you can select during the installation whether you want to install a **client** (workplace) or the **server** (incl. client) on your computer.

If you only want to install a client on your computer, in advance the server the client will be connected to must have been installed on another computer.

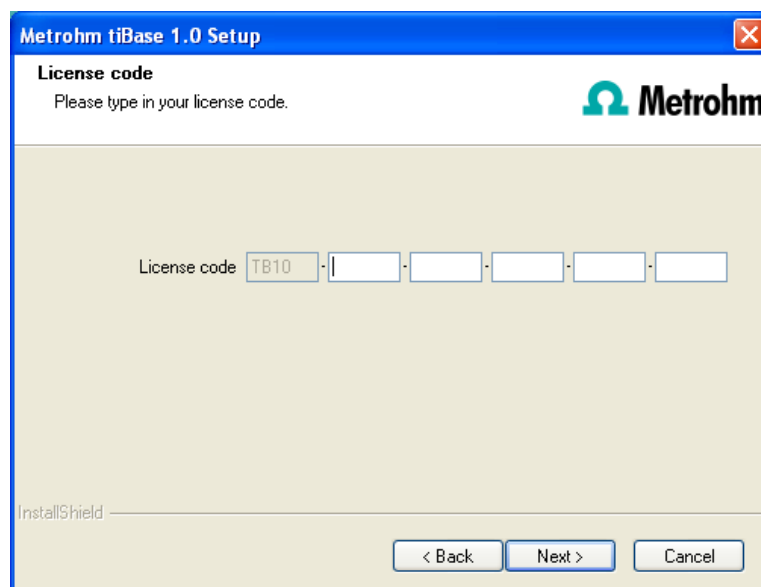
- 1 On inserting the CD into the drive of your computer the installation will be started automatically. If this option is deactivated on your computer, double click the file **setup.exe**.

If the minimum system requirements are not met (see above) a message appears. Click on **[Yes]** if you like to install the program nevertheless.

Afterwards, click on **[Next]**.

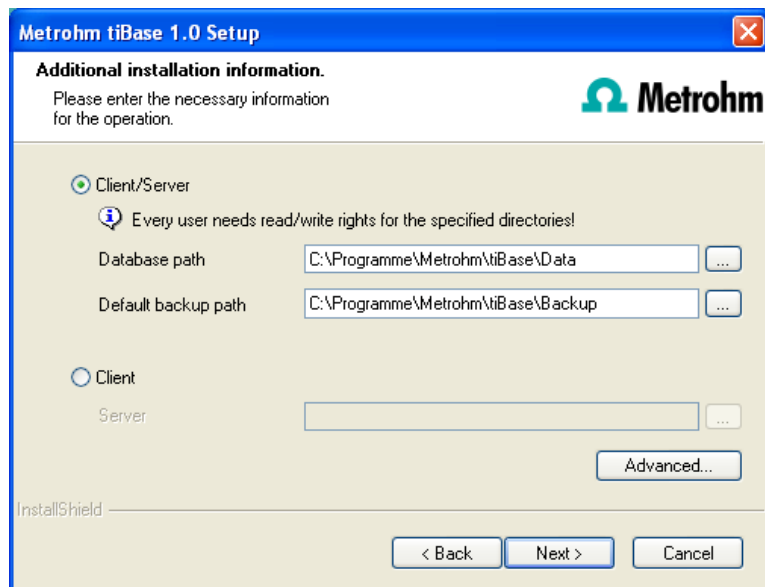
- 2 After having read the license agreement for **tiBase** and accepting it with **[Yes]** a window will appear where you can enter the license code.

- 3 Enter the license code for **tiBase multi** and click on **[Next]**.




- 4 Now enter the target folder for the **tiBase** installation and confirm with **[Next]**.

- 5 The dialog window **Additional installation information** appears where you can select whether you want to install a **client** or the **server**:



The option **workplace** installs the client and the **database server** on your computer. Select this option if your computer will be used as server.

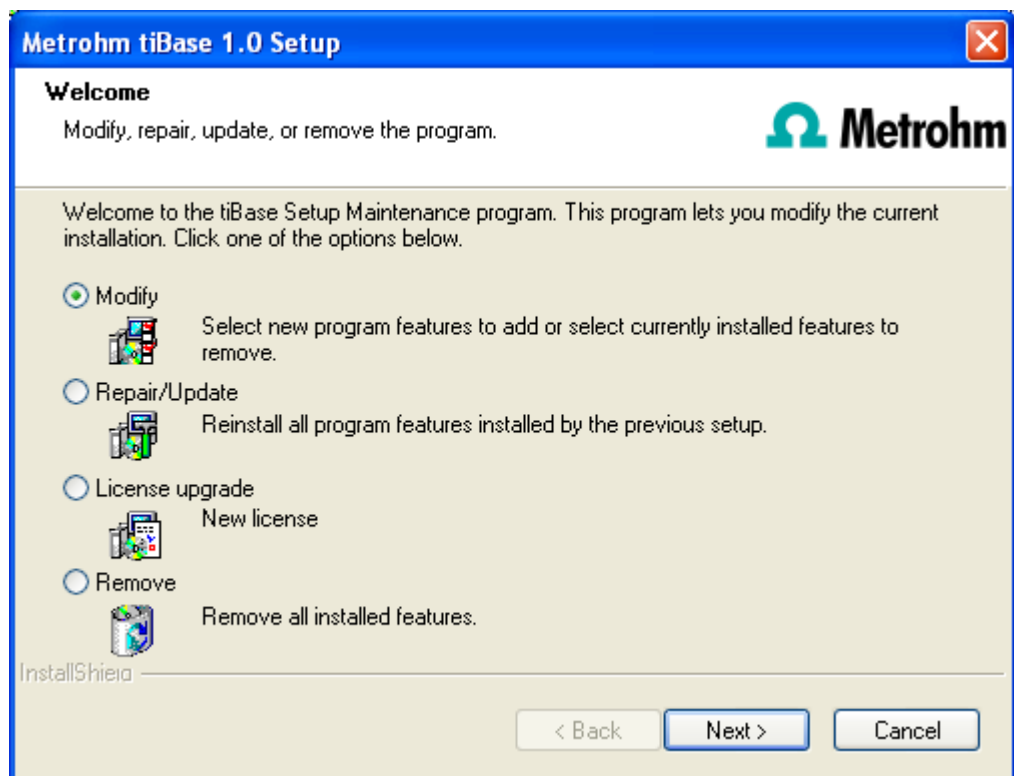
With **client** only the **workplace** will be installed and with  you have to select the database server (has to be installed in advance!) to which you want to connect. The network server name or the IP address are accepted.

With **[Advanced...]** you can modify the ports **tiBase** uses to communicate with the database and administration server. If the ports are used already, an appropriate error message will appear. Ask your system administrator for more information about this. Continue with **[Next]**.

- 6 All further installation steps correspond to those of the single workplace installation on from **point 6**.

## 4 Modify / repair / remove installation and upgrade license

In order to carry out modifications on the current **tiBase** installation start the file **setup.exe** on the installation CD or click on **Metrohm tiBase** under **Control Panel ► Software**. Then select **Change/Remove**:



## Modify

With this option you can change the paths to the database and backup files and set the ports which **tiBase** uses for communication. With the **tiBase multi** version you can additionally change the path to the database server.

If the database path is changed, the existing databases are automatically copied to the new location.

## Repair/Update the program

With this option you can **repair** an existing defective installation or **update** an older installation.

### ▪ Repair installation

In case of a defective **tiBase** installation because e.g. a DLL file is missing or a program file has been deleted by mistake **tiBase** can be repaired with this option.

### ▪ Update installation

In case an older version of **tiBase** is installed, it will be updated to the new version of **tiBase**.



### Caution

During updating older **tiBase** versions the databases will be converted to the new version. Depending on the size of the database, this can take some time. For each database a progress bar is displayed which informs about the status of the conversion.

The computer or Windows must not be restarted or shut down as long as the conversion runs!

## License upgrade

A direct upgrade of your current installation to a **tiBase** version with additional features is possible:

- **tiBase full** to  
**tiBase multi**

In order to do this enter your new license code in the next dialog window.

## Remove

This option removes your **tiBase** installation. Data which has been generated after the installation (e.g. database entries, log files, exported data etc.) will remain on your hard disk.